



FEM Congress 2026

8-9 October 2026 · Paris, France

EVOLIS is pleased to welcome you in Paris for FEM Congress 2026!

Evolis

LES ACTEURS DE L'INDUSTRIE
EN MOUVEMENT

Programme



8 OCTOBER 2026

08:30-09:30		FEM Industrial Trucks Management Committee**
08:30-11:00		FEM Intralogistics Systems Board**
10:00-12:00		FEM Industrial Trucks Plenary
10:00-12:00		FEM Cranes & Lifting Equipment Board**
11:15-15:30		FEM Intralogistics System General Assembly
12:00 - 13:30		<i>Informal lunch during the Product Groups' sessions</i>
13:00-16:00		FEM Cranes & Lifting Equipment Plenary
13:30-17:00		FEM Racking & Shelving General Assembly
14:00-15:00		FEM Mobile Elevating Work Platforms Plenary
15:30-16:30		FEM Mobile Elevating Work Platforms Technical Committee
15:45-16:45		FEM Autonomous Intralogistic Vehicles Plenary
16:30-17:30		FEM Tower & Harbour Cranes (THC Subgroup)
16:45-17:45		FEM Central Board**
<hr/>		
19:15		<i>Departure & transport from Melia Hotel to Eiffel Tower</i>
20:30 - 23:00		<i>Gala Dinner at Madame Brasserie, Eiffel Tower</i>
23:00		<i>Departure and transport to Melia Hotel</i>



9 OCTOBER 2026

08:30 - 10:30		FEM Central General Assembly
11:00 - 13:00		Conference (Theme: TBC)
13:00 - 14:30		<i>Farewell lunch</i>

The meetings marked ** are for Board members only.

Evolis

LES ACTEURS DE L'INDUSTRIE
EN MOUVEMENT

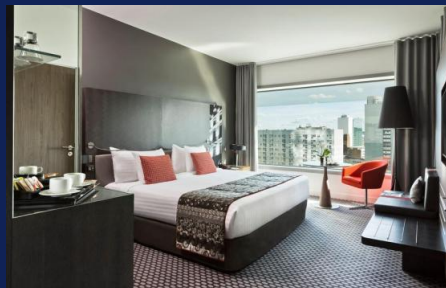
Hotel - MELIA**** Paris La Défense

Parisian charm in spacious settings with timeless views

Located in a safe, modern neighborhood just outside the vibrant heart of Paris,

A perfect base for exploring the City of Light : elegant, modern, and conveniently situated.

Early arrival possible from **Wednesday, October 7th, 2026**



Evolis

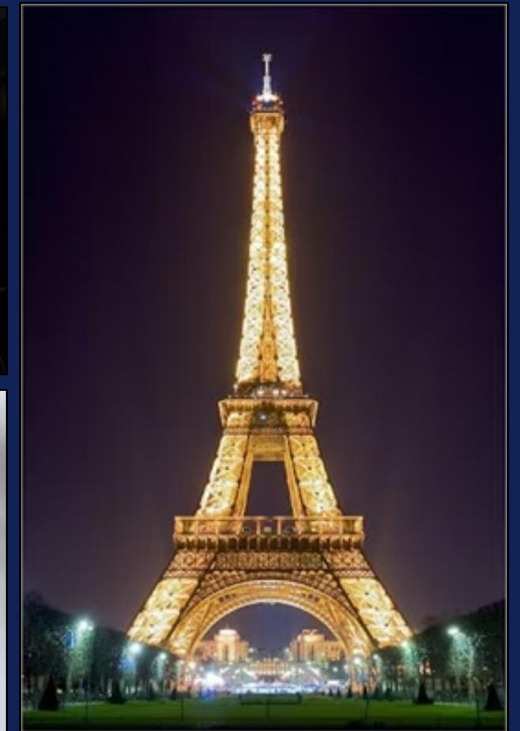
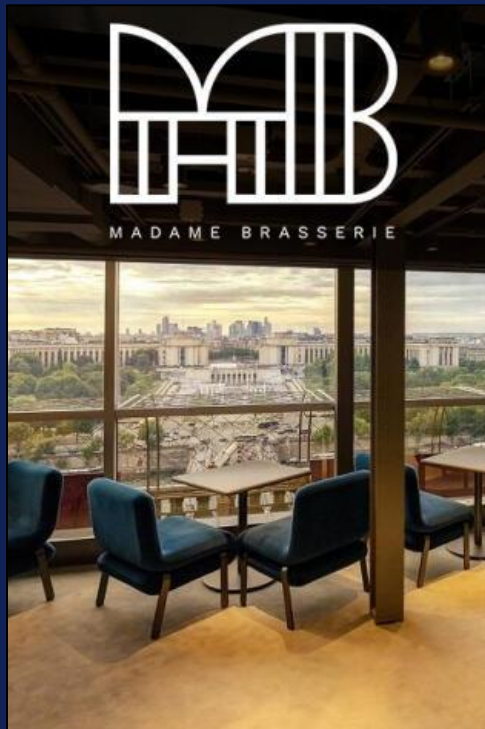
LES ACTEURS DE L'INDUSTRIE
EN MOUVEMENT

Gala Dinner at Madame Brasserie for an extraordinary dining experience!

19:15 Departure from the hotel

Part of the Eiffel Tower's iconic dining establishments, Madame Brasserie offers refined cuisine in a sophisticated, warm setting with a breathtaking view of Paris.

- Chef Thierry Marx
- 1st floor of the Eiffel Tower
- Panoramic restaurant, 58m high



EVOLIS

LES ACTEURS DE L'INDUSTRIE
EN MOUVEMENT