



FEM Congress 2026

8-9 October 2026 · Paris, France

EVOLIS is pleased to welcome you in Paris for FEM Congress 2026!

Evolis

LES ACTEURS DE L'INDUSTRIE
EN MOUVEMENT

Programme






8 OCTOBER 2026

- 08:30–09:30  FEM Industrial Trucks Management Committee**
- 08:30–11:00  FEM Intralogistics Systems Board**
- 10:00–12:00  FEM Industrial Trucks Plenary
- 10:00–12:00  FEM Cranes & Lifting Equipment Board**
- 11:15–15:30  FEM Intralogistics System General Assembly
- 12:00 - 13:30  *Informal lunch during the Product Groups' sessions*
- 13:00–16:00  FEM Cranes & Lifting Equipment Plenary
- 13:30–17:00  FEM Racking & Shelving General Assembly
- 14:00–15:00  FEM Mobile Elevating Work Platforms Plenary
- 15:30–16:30  FEM Mobile Elevating Work Platforms Technical Committee
- 15:45–16:45  FEM Autonomous Intralogistic Vehicles Plenary
- 16:30–17:30  FEM Tower & Harbour Cranes (THC Subgroup)
- 16:45–17:45  FEM Central Board**
- 19:15  *Departure & transport from Melia Hotel to Eiffel Tower*
- 20:30 - 23:00  *Gala Dinner at Madame Brasserie, Eiffel Tower*
- 23:00  *Departure and transport to Melia Hotel*



9 OCTOBER 2026

- 08:30 - 10:30  FEM Central General Assembly
- 11:00 - 13:00  Conference (Theme: TBC)
- 13:00 - 14:30  *Farewell lunch*

Evolis

LES ACTEURS DE L'INDUSTRIE
EN MOUVEMENT

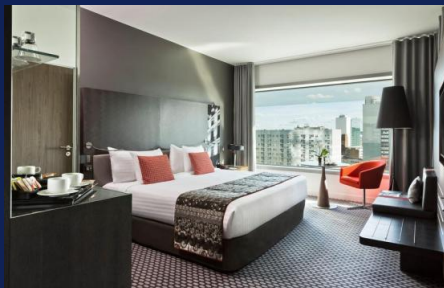
Hotel - MELIA**** Paris La Défense

Parisian charm in spacious settings with timeless views

Located in a safe, modern neighborhood just outside the vibrant heart of Paris,

A perfect base for exploring the City of Light : elegant, modern, and conveniently situated.

Early arrival possible from **Wednesday, October 7th, 2026**



Evolis

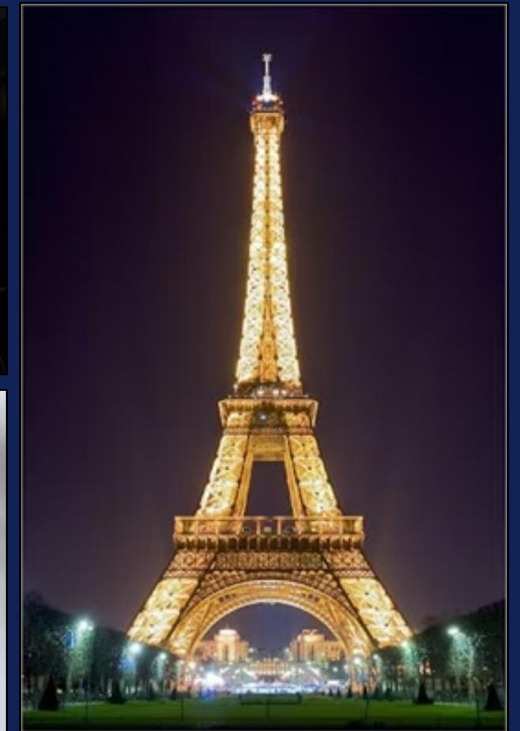
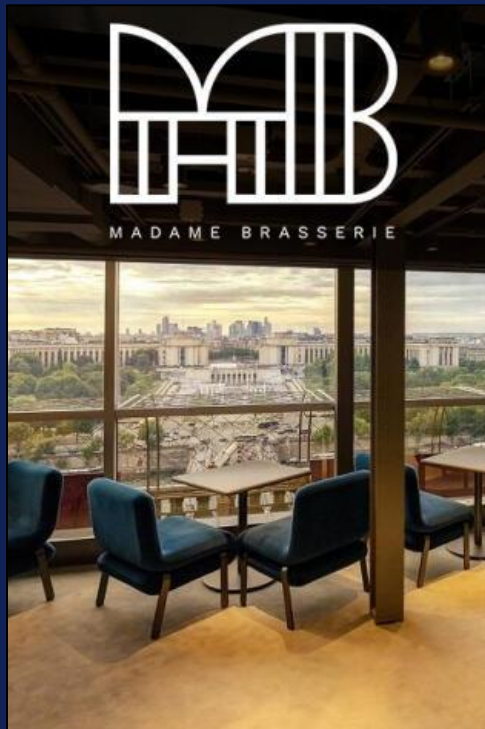
LES ACTEURS DE L'INDUSTRIE
EN MOUVEMENT

Gala Dinner at Madame Brasserie for an extraordinary dining experience!

19:15 Departure from the hotel

Part of the Eiffel Tower's iconic dining establishments, Madame Brasserie offers refined cuisine in a sophisticated, warm setting with a breathtaking view of Paris.

- Chef Thierry Marx
- 1st floor of the Eiffel Tower
- Panoramic restaurant, 58m high



EVOLIS

LES ACTEURS DE L'INDUSTRIE
EN MOUVEMENT